



# MAXIMA

— BY OBEROI REALTY —

MAKE THE MOST OF LIFE



---

THE LIFE  
YOU ALWAYS  
WANTED

---

---

IN A PLACE  
THAT HAS  
IT ALL!

---



MAXIMA  
BY OBEROI REALTY  
MAKE THE MOST OF LIFE

## THOUGHTFULLY CRAFTED & PERFECTLY DETAILED

With a vision to redefine immaculate design and modern architecture  
Maxima by Oberoi Realty is the new paradigm of urban living.

Maxima, is conceived with a vision to make the most of every moment of life. From unmatched location and conveniences in the vicinity to spacious well-planned residences and integrated project amenities.

Disclaimer: This document does not constitute an offer and/or acceptance and/or contract and/or agreement and/or transaction and/or any intention thereof and/or a disclosure under any statute of any nature whatsoever. The pictorial/other representations herein, the layout, number/orientation of buildings/towers/wings/structures, facilities and amenities are merely a creative imagination and an Architect's impression and are only indicative. Actual product may vary/differ from what is indicated herein. The photographs contained herein may be stock/standard photography used for the purpose and may have been taken at a location other than the project site and are used to indicate a conceptual lifestyle. For detailed disclaimers refer to the page "Disclaimers" (page no. 24) all of which are deemed to be incorporated herein.

Maxima  
MahaRERA Registration No: P51800017154  
View details at <https://maharera.mahaonline.gov.in>



The Maxima vision has been brought to life with the most efficiently designed luxurious residences with lavish living, dining and kitchen spaces.

Disclaimer: This document does not constitute an offer and/or acceptance and/or contract and/or agreement and/or transaction and/or any intention thereof and/or a disclosure under any statute of any nature whatsoever. The pictorial/other representations herein, the layout, number/orientation of buildings/towers/wings/structures, facilities and amenities are merely a creative imagination and an Architect's impression and are only indicative. Actual product may vary/differ from what is indicated herein. The photographs contained herein may be stock/standard photography used for the purpose and may have been taken at a location other than the project site and are used to indicate a conceptual lifestyle. For detailed disclaimers refer to the page "Disclaimers" (page no. 24) all of which are deemed to be incorporated herein.

Maxima  
MahaRERA Registration No: P51800017154  
View details at <https://maharera.mahaonline.gov.in>

---

MAKE THE  
MOST OF  
THE DETAILS

---

INTERIOR SPECIFICATIONS



The little details make the biggest difference. Maxima's urban family residences provide privacy and space for all your family members making it a dream abode for your growing family. The carefully drafted details of your apartment are planned with our experts to suit your needs and lifestyle to ensure you make the most of life.



## WHERE EVERY DETAIL HAS BEEN TAILORED TO OFFER YOU THE BEST

- Imported marble flooring for living, dining, kitchen and all bedrooms
- Vitrified tiles for bathroom flooring
- Full height vitrified tiles as dado for bathrooms
- Aluminium powder coated windows
- Branded C.P. fittings
- Kitchen platform with stainless steel sink with drain board
- Wash basin counters
- Vitrified tiles dado 2' high above kitchen platform
- Branded electrical switches
- Concealed plumbing
- Internal laminated flush doors

Disclaimer: This document does not constitute an offer and/or acceptance and/or contract and/or agreement and/or transaction and/or any intention thereof and/or a disclosure under any statute of any nature whatsoever. The pictorial/other representations herein, the layout, number/orientation of buildings/towers/wings/structures, facilities and amenities are merely a creative imagination and an Architect's impression and are only indicative. Actual product may vary/differ from what is indicated herein. The photographs contained herein may be stock/standard photography used for the purpose and may have been taken at a location other than the project site and are used to indicate a conceptual lifestyle. For detailed disclaimers refer to the page "Disclaimers" (page no. 24) all of which are deemed to be incorporated herein.

Maxima  
MahaRERA Registration No: P51800017154  
View details at <https://maharera.mahaonline.gov.in>



---

MAKE THE  
MOST OF  
COMFORTS

---

AMENITIES



Your home comes equipped with world-class amenities including a state-of-the-art gymnasium, an open deck swimming pool as well as a play area for the little ones.

We ensure that you indulge and enjoy the little moments in life.



Gymnasium



Swimming Pool



Children's Play Area  
on Podium



Landscaped Garden  
on Podium



Decorative Entrance Lobby



CCTV in Select  
Common Areas



High Speed Elevators



Back-up Generator  
for Emergency Power

Disclaimer: This document does not constitute an offer and/or acceptance and/or contract and/or agreement and/or transaction and/or any intention thereof and/or a disclosure under any statute of any nature whatsoever. The pictorial/other representations herein, the layout, number/orientation of buildings/towers/wings/structures, facilities and amenities are merely a creative imagination and an Architect's impression and are only indicative. Actual product may vary/differ from what is indicated herein. The photographs contained herein may be stock/standard photography used for the purpose and may have been taken at a location other than the project site and are used to indicate a conceptual lifestyle. For detailed disclaimers refer to the page "Disclaimers" (page no. 24) all of which are deemed to be incorporated herein.

Maxima  
MahaRERA Registration No: P51800017154  
View details at <https://maharera.mahaonline.gov.in>

---

MAKE THE  
MOST OF  
YOUR TIME

---

LOCATION

Maxima is well connected to numerous options for shopping, entertainment, healthcare and education, so that you can make the most of your life.



OBEROI INTERNATIONAL SCHOOL, JVLR - 0.4 KM



WESTERN EXPRESS HIGHWAY - 1.3 KM



SEEPZ - 2.4 KM



SEVEN HILLS HOSPITAL - 4.2 KM



THE WESTIN MUMBAI GARDEN CITY - 5.0 KM



OBEROI MALL - 5.1 KM



POWAI - 5.2 KM



AIRPORT - 6.6 KM



PROPOSED METRO STATION - 0.2 KM

MAXIMA AT ANDHERI (E), MUMBAI

LOCATION MAP



MAXIMA AT ANDHERI (E), MUMBAI



Disclaimer: This document is a pictorial, indicative and selective representation of certain elements present/ that may be present in and around Mumbai City/project site and is not a map. The Developer makes no representations regarding existence/continuity of existence of any landmarks/ locations shown on this location map. These landmarks/ locations may be subject to change from time to time and such changes are completely outside the control of the Developer. For detailed disclaimers refer to the page "Disclaimers" (page no. 24) all of which are deemed to be incorporated herein.

---

MAKE THE  
MOST OF  
YOUR HOME

---

LAYOUTS AND FLOOR PLANS

# SITE LAYOUT AT GROUND LEVEL



MAXIMA AT ANDHERI (E), MUMBAI

Disclaimer: This document is representative of the Approved Layout With Phasing/User Superimposed, pertaining to the overall development of the layout and is a mere creative imagination and is only indicative. This document shall be considered for representational purposes only, with the intention to provide an impression of the layout as presently proposed and/or approved. The Approved Layout With Phasing/User Superimposed may be modified and amended as mentioned in the proforma Agreement for Sale and permissible under applicable law. For detailed disclaimers refer to the page "Disclaimers" (page no. 24) all of which are deemed to be incorporated herein.  
 \*Entry/Exit exclusively for Splendor Complex Society to access parking at Basement 3 level.

Maxima  
 MahaRERA Registration No: P51800017154  
 View details at <https://maharera.mahaonline.gov.in>

## SITE LAYOUT AT AMENITY LEVEL



MAXIMA AT ANDHERI (E), MUMBAI

Disclaimer: This document is representative of the Approved Layout With Phasing/User Superimposed, pertaining to the overall development of the layout and is a mere creative imagination and is only indicative. This document shall be considered for representational purposes only, with the intention to provide an impression of the layout as presently proposed and/or approved. The Approved Layout With Phasing/User Superimposed may be modified and amended as mentioned in the proforma Agreement for Sale and permissible under applicable law. For detailed disclaimers refer to the page "Disclaimers" (page no. 24) all of which are deemed to be incorporated herein.

Maxima  
MahaRERA Registration No: P51800017154  
View details at <https://maharera.mahaonline.gov.in>



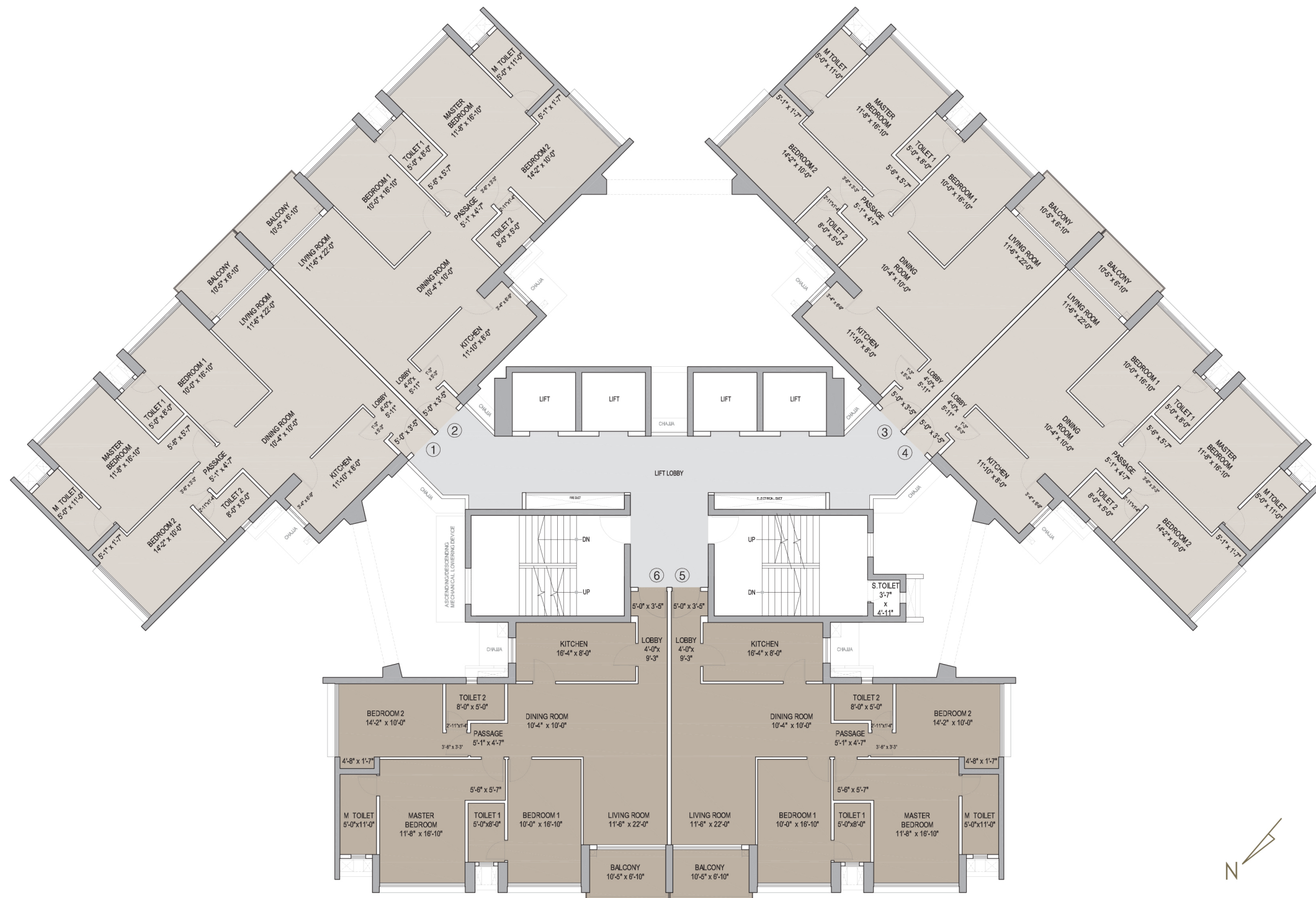
# PLAN FOR APARTMENT ORIENTATION



MAXIMA AT ANDHERI (E), MUMBAI

# TYPICAL FLOOR PLAN

Floors (6, 7, 10 to 14, 17 to 21 & 24 to 28)

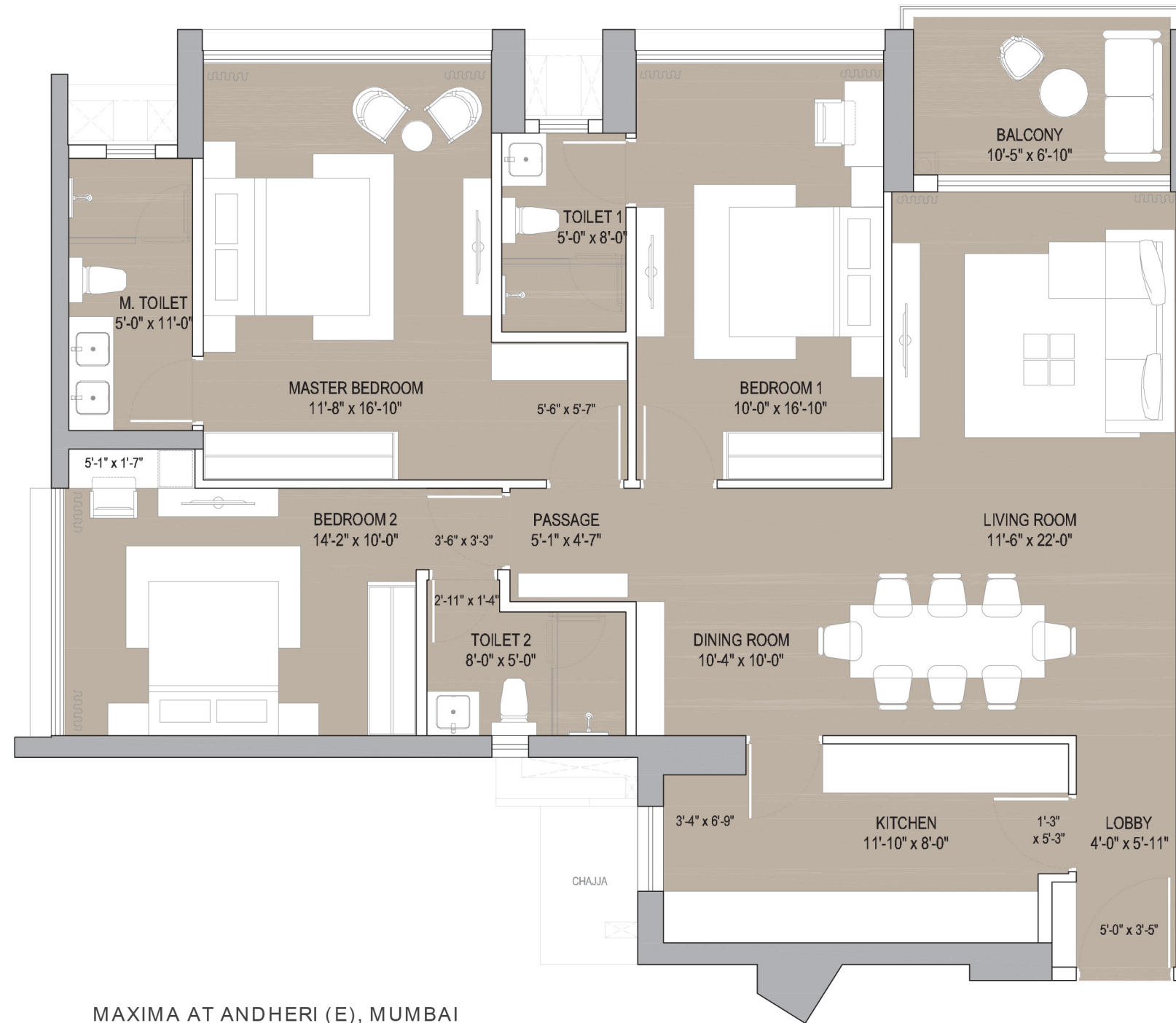


MAXIMA AT ANDHERI (E), MUMBAI

Disclaimer: The details mentioned on these floor plans are as per the plans approved by MCGM. This floor plan may be modified and amended as mentioned in the proforma agreement for sale. For detailed disclaimers refer to the page "Disclaimers" (page no. 24) all of which are deemed to be incorporated herein.

Maxima  
 MahaRERA Registration No: P51800017154  
 View details at <https://maharera.mahaonline.gov.in>

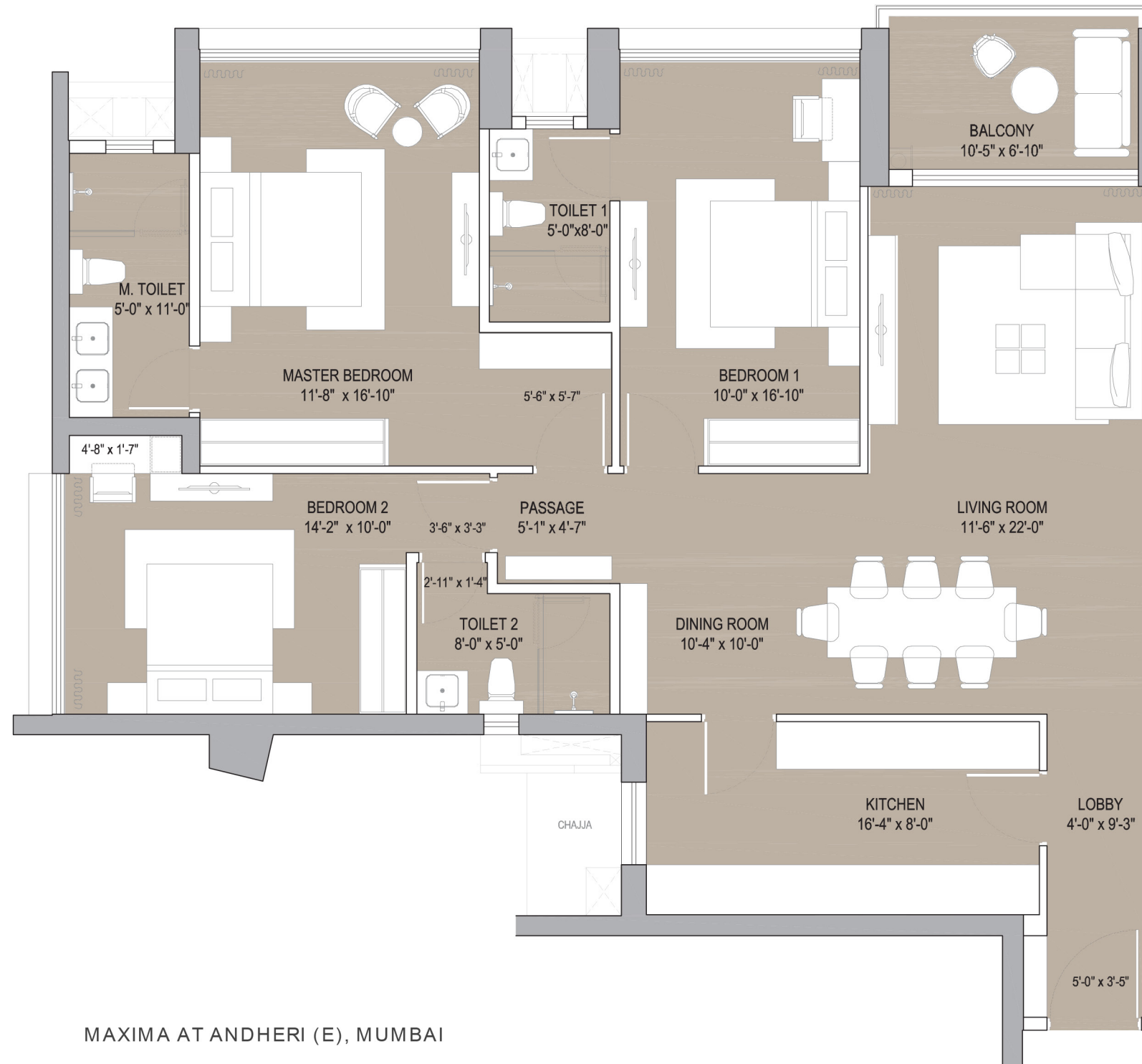
## TYPICAL APARTMENT PLAN TYPE - A (1,2,3 & 4)



The dimensions mentioned on these floor plans are as per the plans approved by MCGM. The furniture/fixture etc shown in the image are only indicative and representative (not actual) in nature and are only for the purpose of illustrating/reflecting a possible layout and do not form part of the standard specification, amenities, services etc to be provided in respect of the flat. All specification of the flat shall be as per the AFS between the parties. This document may be modified and amended as mentioned in proforma AFS. For detailed disclaimers refer to the page "Disclaimers" (page no. 24) all of which are deemed to be incorporated herein.

Maxima  
 MahaRERA Registration No: P51800017154  
 View details at <https://maharera.mahaonline.gov.in>

## TYPICAL APARTMENT PLAN TYPE - B (5 & 6)



MAXIMA AT ANDHERI (E), MUMBAI

The dimensions mentioned on these floor plans are as per the plans approved by MCGM. The furniture/fixture etc shown in the image are only indicative and representative (not actual) in nature and are only for the purpose of illustrating/reflecting a possible layout and do not form part of the standard specification, amenities, services etc to be provided in respect of the flat. All specification of the flat shall be as per the AFS between the parties. This document may be modified and amended as mentioned in proforma AFS. For detailed disclaimers refer to the page "Disclaimers" (page no. 24) all of which are deemed to be incorporated herein.

Maxima  
 MahaRERA Registration No: P51800017154  
 View details at <https://maharera.mahaonline.gov.in>

---

MAKE THE  
MOST OF  
THE EXPERTISE

---

PARTNERS AND ARCHITECTS

---

MAKE THE  
MOST OF  
THE EXCELLENCE

---

OBEROI REALTY

---

MAKE THE  
MOST OF  
THE EXCELLENCE

---

OBEROI REALTY

Since the past 30 years, we at Oberoi Realty have strived to redefine luxury spaces in Mumbai. We have developed over 42 completed projects at strategic locations across the Mumbai skyline.

At Oberoi Realty, it is a constant quest for spaces that can not only accommodate but also build efficiencies for its everyday flight of ambition and purpose-led growth.



## DISCLAIMERS

1. Oberoi Constructions Ltd. has compiled this brochure for information purposes only. All data only serves the non-commercial use of the individual receiving this brochure. Publication of any information contained in this brochure is prohibited. Information contained in this brochure has been compiled with the utmost care using sources and resources classified as reliable. All statements and information made in this brochure or by Oberoi Constructions Ltd. are for information purposes only and completely without obligation. All information should be examined and verified by an independent source. Oberoi Constructions Ltd. assumes no liability for any losses or damage resulting from the trust, reliance or dependence on the information contained in this brochure by any party, including potential purchasers. Publishing of information contained herein is expressly prohibited.
2. Purchasers are requested to independently, either directly or through their legal/financial consultants, thoroughly verify all details/documents pertaining to this project, including but not limited to the Approved Layout With Phasing/ User Superimposed; the proforma Agreement for Sale, the details of fixtures and fittings, the common areas facilities and amenities, the approvals and permissions, the title certificate and details of encumbrances (If any) as available on <https://maharera.mahaonline.gov.in> under the project name 'Maxima' bearing MahaRERA registration number P51800017154.
3. This brochure does not constitute an offer and/or acceptance and/or contract and/or agreement and/or transaction and/or any intention thereof and/or a disclosure under any statute of any nature whatsoever.
4. The layout plan, the orientation of buildings/towers/wings/structures, the common areas, facilities and amenities, the fixtures, fittings, soft furnishing/furniture, gadgets, technology, information, pictures, images and visuals, drawings, specifications, sketches and other details herein are merely creative imagination and an Architect's impression and are only indicative. These should not be construed in any manner as disclosures under the provisions of the Real Estate (Regulation and Development) Act, 2016 and the Rules thereunder and/or any statute of any nature whatsoever. Oberoi Constructions Ltd. accepts no liability or loss arising from the use of the material, information or statistics published in this brochure.
5. All dimensions mentioned in this brochure may vary/differ due to construction exigencies. Actual product may vary/differ from what is indicated herein.
6. The photographs contained herein may be stock/standard photography used for the purpose and may have been taken at a location other than the project site and are used to indicate a conceptual lifestyle.
7. Certain information contained in this material may constitute "forward-looking statements," which can be identified by the use of forward-looking terminology such as "may", "will", "should", "expect", "anticipate", "target", "project", "estimate", "intend", "continue" or "believe" or the negatives thereof or other variations thereon or comparable terminology. Due to various risks and uncertainties, actual events or results or the actual performance of Oberoi Constructions Ltd. may differ materially from those reflected or contemplated in such forward-looking statements. The views expressed in this brochure are based upon past or current market conditions and/or data and information provided and is subject to change without notice.
8. No representation or warranty is made or intended as to the accuracy or completeness of information herein or as to its suitability or adequacy for any purpose.
9. By agreeing to purchase, you have represented that you are fully and completely satisfied on all aspects of this project including as mentioned above, and that all documents and information as required to be furnished to you under RERA and applicable law have been duly furnished.



MahaRERA QR Codes

## CONTACT US

Corporate address:

Oberoi Construction Limited, Commerz, 3rd Floor, International Business Park, Oberoi Garden City, Off Western Express Highway, Goregaon (East), Mumbai-400 063. India

Site address:

Maxima by Oberoi Realty, Jogeshwari Vikhroli Link Road, Andheri (East), Mumbai – 400060

Contact number: +91 22 6863 0680

Email id: [maxima@oberoirealty.com](mailto:maxima@oberoirealty.com)

Website: [www.oberoirealty.com](http://www.oberoirealty.com)